



geodesia

FALL WINTER 22



The collection

The term geodesy, from the Greek ("earth") and ("to divide") means "geographical divisions of the earth" and geodesy is, at the same time, one of the earth sciences. It deals with the survey and representation of the shape and surface of the Earth, global and partial, with its natural and artificial forms.

Geodesia is inspired by the concept of "open-air living". This Norwegian concept celebrates outdoor adventures and lifestyles, regardless of cold or rain, and encourages a focus rooted in mindfulness and self-care.

Geodesia transports you to the top of the mountains, to the icy rivers and their pure air but also to the warmest part of their smells, textures, shapes and the most awaited moment when you get home: a coffee sitting on the sofa.

Geodesia invites you to climb those personal goals that make you dizzy, Geodesia is cold and warm at the same time. It is a mixture of moments and winters with different points of view





















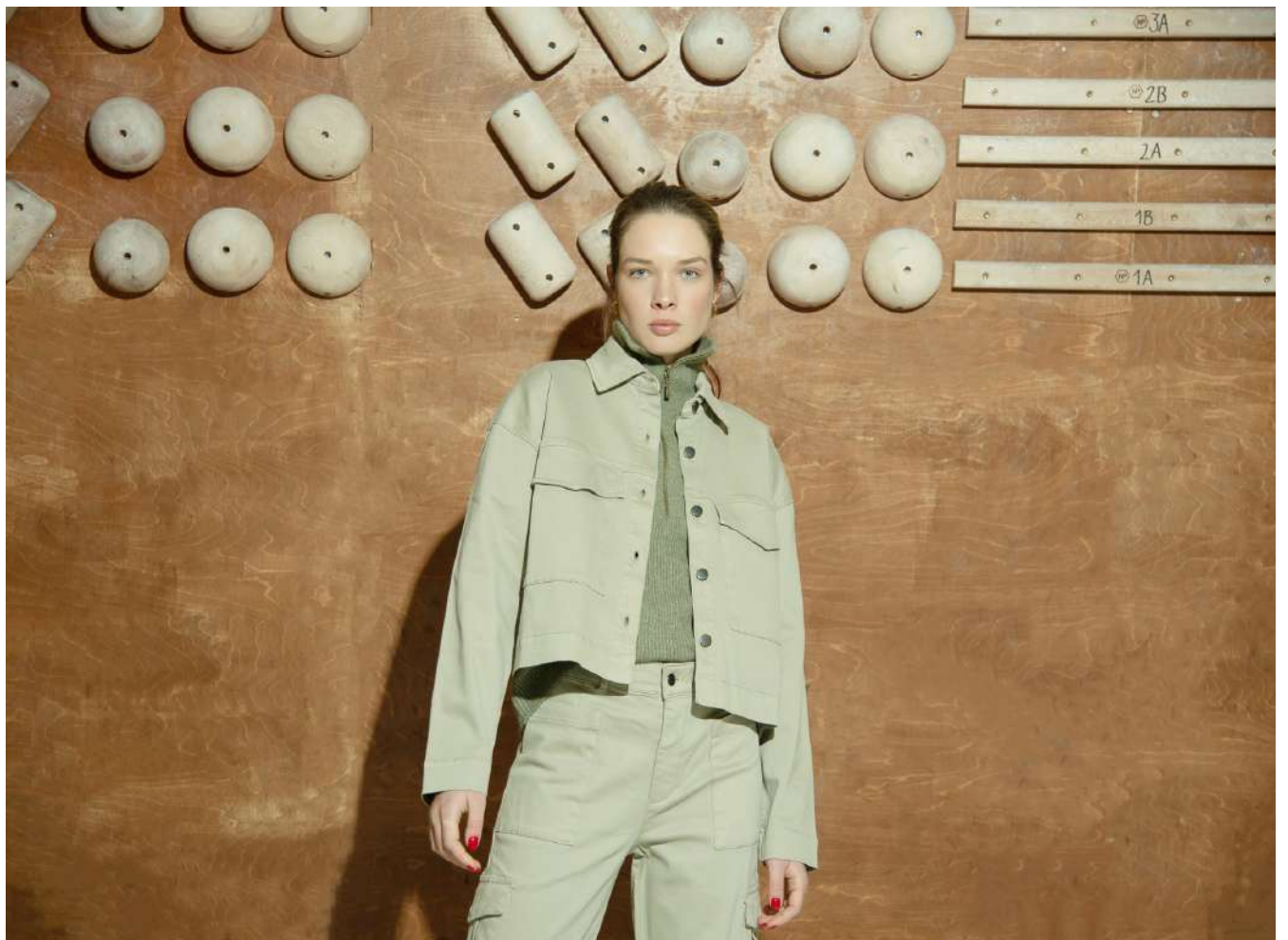




































D E S I G N E R S
S O C I E T Y